

Springtime Trail at

Leicester Museum & Art Gallery

New Walk's world of discovery

Tick as you find



Dinosaur Gallery

Did ichthyosaurs lay eggs or have babies?

Tick as you find



Arts & Crafts

Who painted this picture of Birds' Nests?

Tick as you find



Geology Gallery

What kind of bird does this skeleton wing belong to?

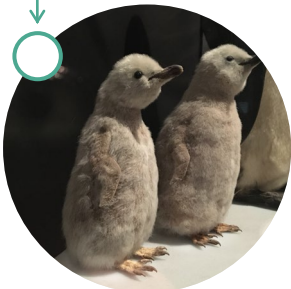
Tick as you find



Picasso Ceramics

Can you name this Picasso plate? *It reminds us of the Pan, God of the Wild!*

Tick as you find



Wild Space

Baby penguins are called chicks. How many can you count in the Arctic?

Tick as you find



The World We Live In

Complete the name of the bar sign on this artwork:

The Egret -- Eating

Tick as you find



Wild Space

Where can you find this baby wallaby, called a Joey? They stay in their mother's pouch for months after birth.

Tick as you find



German Expressionism

In which year were these tulips painted?

Tick as you find



Victorian Art Gallery

What was Hebe the Ancient Greek Goddess of?

Flip Page



Tick as you find



Ancient Egypt

Which sacred river did the Ancient Egyptians depend on?

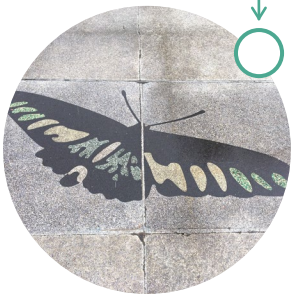
Tick as you find



Ancient Egypt

Can you find this case about Scarab Beetles? They were considered sacred because full beetles emerged from the sand, like magical R _ B _ _ _ _

Tick as you find

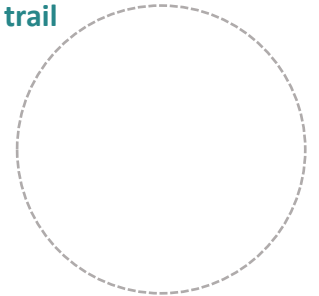


Outside the Museum

Bonus Question: How many butterflies can you count on the pavement?

Finished?

Get your printed trail stamped!



Answers

- + 15
- Rebirth
- River Nile
- 1920
- Egg
- Pipe Player
- William Henry Hunt
- Youth
- Australasia
- 3 (4 including the brown teenager!)
- Stork
- Babies

Colouring In:
Franz Marc –
The Red Deer

